



DRAINAGE DESIGN MANAGEMENT SYSTEM FOR WINDOWS VERSION 6.8.0

TUTORIAL # 4

UPDATING NSTPS VALUES FOR CHANNEL ROUTING



KVL Consultants, Inc.

UPDATING NSTPS VALUES FOR CHANNEL ROUTING

TABLE OF CONTENTS

No.	Section	Page
1.0	INTRODUCTION.....	1
2.0	OPEN THE PROJECT.....	2
3.0	ENTER INITIAL NSTPS VALUES.....	2
4.0	UPDATE THE MODEL	3
5.0	EXECUTE PROGRAM TO EVALUATE NSTPS VALUES.....	5
6.0	RUN THE MODEL	6
7.0	NOTES.....	8

UPDATING NSTPS VALUES FOR CHANNEL ROUTING

DATE UPDATED: MAY 7, 2024

TUTORIAL TIME: 30 MINUTES

1.0 INTRODUCTION

This tutorial document is developed to guide users in evaluating the NSTPS parameter (HEC-1 RS card's first field) for channel flow routing in HEC-1 using DDMSW. The input data file is an existing HEC-1 input file where normal-depth storage routing methodology is used. The implemented tool within the DDMSW program creates an updated HEC-1 input file that includes a refined set of NSTPS values updated from two successive model runs.

NSTPS is normally evaluated from flow and reach characteristics of the project area. It is usually estimated by the following relation (HEC, 1998).

$$NSTPS = [Channel Reach Length / Average Flow Velocity] / Time Interval (1)$$

It can also be estimated by:

$$NSTPS = [Difference in Time-to-Peak between Channel Inflow and Outflow Hydrographs for Routed Flows] / Time Interval (2)$$

Normally, the determination of the refined values of NSTPS can be made from several runs of the HEC-1 model, until the values converge. There are rare occasions, however, when NSTPS do not converge (i.e., values swing back and forth between iterations). In these cases, the modeler should look into the matter and use engineering judgment to select appropriate values of NSTPS adequate for his/her modeling purposes. One possible solution is to manually use Manning's equation to estimate the channel flow velocity and then estimate NSTPS by Equation (1) above. The manually estimated NSTPS can then be entered into an HEC-1 input file for the channel routings whose NSTPS values do not converge. To detect if there are any channel routings whose NSTPS values do not converge, users can execute the tool within DDMSW twice (i.e., three (3) model iterative runs in each execution). Here, the second-time model execution (i.e., three more iterative model runs) provides refined NSTPS values for the HEC-1 input file. This process of executing the model twice will shed light if there is any instability in the NSTPS values.

The program is based on two assumptions. The first assumption is that normal-depth channel routings are defined by RS cards with FLOW as a keyword in Field 2. It should be mentioned that there might be some exceptions to this assumption due to many combinations of routing parameters though this assumption is valid

for most cases. Users should check to make sure that the intended channel routings are defined by RS card with FLOW as a keyword in Field 2. The second assumption is that all ID's in KK cards are unique. Users should check to make sure that there are no duplicate (**ID's in**) KK cards. It is the users' responsibility to check and accept the final results.

For purposes of illustration, this tutorial will use KVLEEXAMPLE1.DAT. After completing the tutorial, the user should test the tool using his or her project data.

2.0 OPEN THE PROJECT

After launching the DDMSW program, open an existing project (**'File => Select Project'**). Select **KVLEEXAMPLE1** from the project list. Press **'OK'** to close the **SELECT PROJECT** form. **[Note:** Please use the DDMSW project file **'KVLEexample1.zip'** that is bundled along with the tutorial document for this tutorial. To use the attached project data, delete first the **'KVLEexample1'** project in DDMSW and once it is deleted, to import the **'KVLEexample1.zip'** into DDMSW (**File → Project Management→Import**).

3.0 ENTER INITIAL NSTPS VALUES

Go to the Routing Menu (**'Hydrology → HEC-1 → Routing'**). On the **HEC-1 ROUTING DATA** form, check the custom check boxes to the right of the **'Steps'** field for all the return periods. This allows you to enter an initial step value into the current routing card. Enter initial step values into the **'NSTPS'** field. Now, uncheck the custom check boxes and press **'Save'**. Repeat for every routing card or record. When finished, press **'OK'** to close the **HEC-1 ROUTING DATA** form.

HEC-1 Data - MB: 01

List Details

Find Next

F0	F1	F2	F3	F4	F5	F6	F7	F8	F9	F10	Sort	Special Code ID
ID		KVL Cons	ultants	Inc.							10	
ID		VLEXAMP	LE1 - Ex	ample 1	HEC-1 tu	torial p	roject				20	
ID		2 YEAR									30	
ID		6 Hour	Storm								40	
ID		Unit Hyd	rograph:	Clark							50	
ID		Storm: M	ultiple								60	
ID		04/25/20	18								70	
*D	IAGRAM										80	
IT	5	1JAN99	0	2000							90	
IO	5										100	
IN	15										110	
*											120	
JD	1.180	0.0001									130	
PC	0.000	0.008	0.016	0.025	0.033	0.041	0.050	0.058	0.066	0.074	140	
PC	0.087	0.099	0.118	0.138	0.216	0.377	0.834	0.911	0.931	0.950	150	
PC	0.962	0.972	0.983	0.991	1.000						160	

Info Export ReSort Print... Delete Add MB Update OK

On the **UPDATE HEC-1 DATA** form, press '**Yes**' to continue.

Update HEC-1 Data

i This will update the HEC-1 model data for the current Major Basin.

Initially select a Return Period for the Rainfall then the program will update the following:

- Sub Basin
- Rainfall
- Diversion
- Routing
- Storage
- Hydrographs
- Special Code

Do you want to continue?

Yes No

Select a return period. Press the '**OK**' button for DDMSW to update the HEC-1 model with the latest parameters from the data entry menus, including the initial routing NSTPS values. Press '**OK**' to close the **HEC-1 DATA** form.

HEC-1 Data - MB: 01

Find Next

F0	F1	F2	F3	F4	F5	F6	F7	F8	F9	F10	Sort	Special Code ID
ID		KVL Cons	uitants	Inc								
ID		VLEXAMP	LE1 - Ex	ample 1	HEC-1 tu	torial p	roject				10	
ID		2 YEAR									30	
ID		6 Hour	Storm								40	
ID		Unit Hyd	rograph:	Clark							50	
ID		Storm: M	ultiple								60	
ID		04/25/20	18								70	
*D	IAGRAM										80	
IT	5	1JAN99	0	2000							90	
IO	5										100	
IN	15										110	
*											120	
JD	1.180	0.0001									130	
PC	0.000	0.008	0.016	0.025	0.033	0.041	0.050	0.058	0.066	0.074	140	
PC	0.087	0.099	0.118	0.138	0.216	0.377	0.834	0.911	0.931	0.950	150	
PC	0.962	0.972	0.983	0.991	1.000						160	

Info Export ReSort Print... Delete Add MB Update OK

5.0 EXECUTE PROGRAM TO EVALUATE NSTPS VALUES

On the **HEC-1 ROUTING DATA** form (*'Hydrology → HEC-1 → Routing'*), click the **"Update NSTPS from HEC-1"** button.

HEC-1 Routing Data - MB: 01

Look for

ID	Type
010105	Normal Depth
010110	Normal Depth

Route

Major Basin ID 01

Route ID 010105

Type NORMAL DEPTH

☐ Channel Loss

Normal Depth

	Station	Elevation
LOB N	0.035	1. 510.0 99.70
Chan N	0.038	2. 1510.0 94.10
ROB N	0.035	LB 1585.0 93.60
Length	4224.0	4. 1596.0 92.20
Slope	0.0012	5. 1600.0 92.20
Max Elev	99.70	RB 1612.0 93.60
		7. 1662.0 94.90
		8. 2262.0 99.70

NSTPS

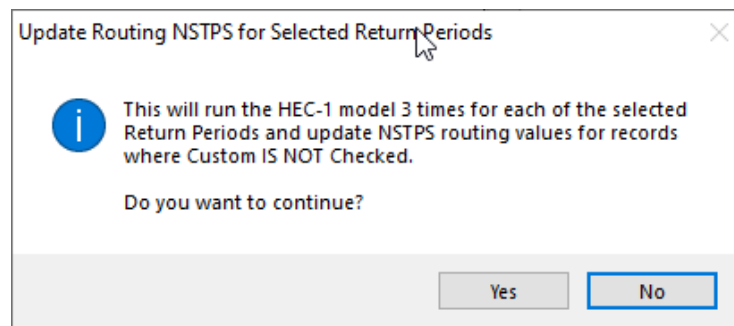
Model	NSTPS	Custom
2 Year	<input checked="" type="checkbox"/>	8 <input type="checkbox"/>
5 Year	<input checked="" type="checkbox"/>	6 <input type="checkbox"/>
10 Year	<input checked="" type="checkbox"/>	6 <input type="checkbox"/>
25 Year	<input checked="" type="checkbox"/>	5 <input type="checkbox"/>
50 Year	<input checked="" type="checkbox"/>	5 <input type="checkbox"/>
100 Year	<input checked="" type="checkbox"/>	5 <input type="checkbox"/>
Custom	<input type="checkbox"/>	

Update NSTPS from HEC-1

Info Copy Print... Delete Add MB OK

A pop-up message will appear stating that HEC-1 will run 3 times for each of the

selected return periods. This will update the NSTPS routing values, only if the custom checkbox is unchecked. Press **'Yes'** to continue.



After the last HEC-1 run is completed, the NSTPS values for the routing cards will be updated. Press **'OK'** to close the **HEC-1 ROUTING DATA** form.

Look for

ID	Type
010105	Normal Depth
010110	Normal Depth

Route

Major Basin ID:

Route ID:

Type:

☐ Channel Loss

Normal Depth

		Station	Elevation
LOB N	0.035	1. 510.0	99.70
Chan N	0.038	2. 1510.0	94.10
ROB N	0.035	LB 1585.0	93.60
Length	4224.0	4. 1596.0	92.20
Slope	0.0012	5. 1600.0	92.20
Max Elev	99.70	RB 1612.0	93.60
		7. 1662.0	94.90
		8. 2262.0	99.70

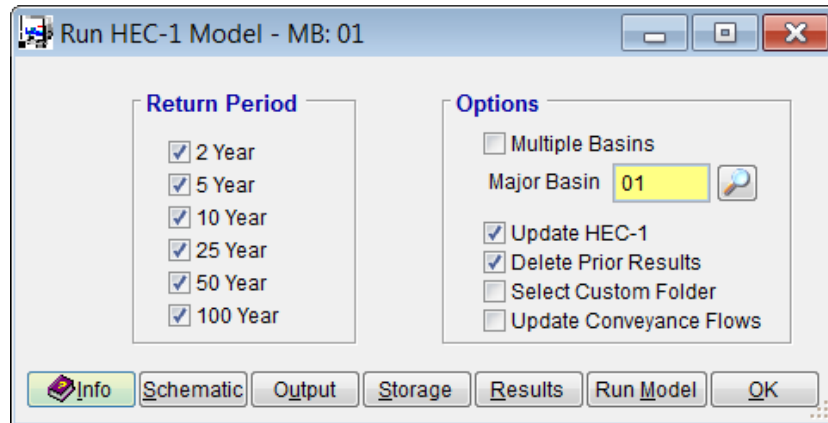
NSTPS

	Model	NSTPS	Custom
2 Year	<input checked="" type="checkbox"/>	8	<input type="checkbox"/>
5 Year	<input checked="" type="checkbox"/>	6	<input type="checkbox"/>
10 Year	<input checked="" type="checkbox"/>	6	<input type="checkbox"/>
25 Year	<input checked="" type="checkbox"/>	5	<input type="checkbox"/>
50 Year	<input checked="" type="checkbox"/>	5	<input type="checkbox"/>
100 Year	<input checked="" type="checkbox"/>	5	<input type="checkbox"/>
Custom	<input type="checkbox"/>		

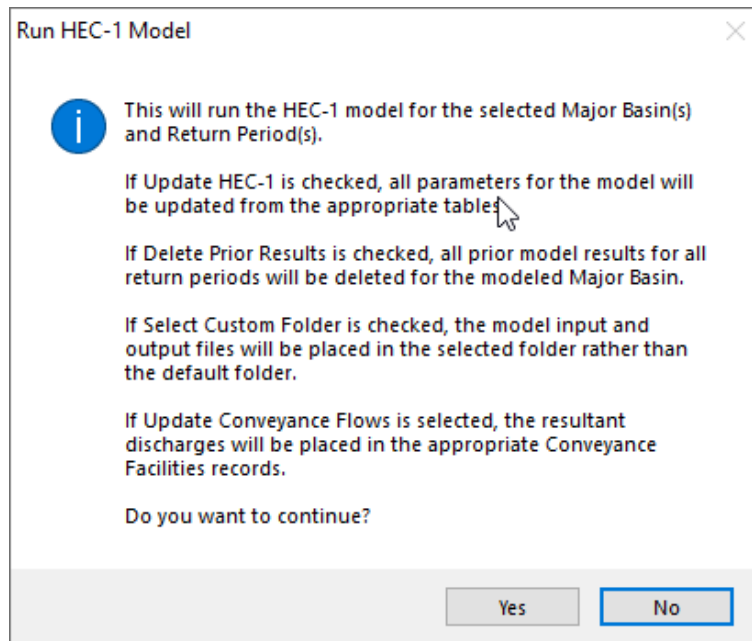
6.0 RUN THE MODEL

After all the NSTPS values have been determined and accepted, you can run the HEC-1 model to obtain your model results.

To run the model, open the **RUN HEC-1 MODEL** form (**'Hydrology → HEC-1 → Model'**) and check the following checkboxes: All the events in the **'Return Period'**, the **'Update HEC-1'** checkbox, and the **'Delete Prior Results'** checkbox. Finally, click the **'Run Model'** button to execute the program.



Click **‘Yes’** twice to continue.



Afterwards, you can view the model results by clicking the **‘Results’** button on the **RUN HEC-1 MODEL** form. Alternatively, you can also view the results from **‘Hydrology → HEC-1 → Flow Summary’**.

[illegible]

7.0 NOTES

- A. When you check the **'Custom'** checkbox (3rd column) next to the **'Steps'** field on the **HEC-1 ROUTING DATA** form (**'Hydrology → HEC-1 → Routing'**), the program will lock the entered values so they could not be changed even when the **'Update Steps from HEC-1'** button is pressed. Only the ones that are unchecked will be updated by the program.
- B. If you receive **'Output file not found'** messages after pressing the **'Update Steps from HEC-1'** button, while on the **HEC-1 ROUTING DATA** form, check the model runs path (**'File → Project Paths → Model Runs Path'**) to ensure that you have set the path for the project; otherwise, define the **Model Runs Path** by using the ellipse (...) button on the right side of the **Model Runs Path** textbox.
- C. To ensure that NSTPS values have reached stability, the tool may have to be executed more than once. To run the tool for the second or the third time, press the **'Update Steps from HEC-1'** button after the first or second execution.
- D. Selecting the **'Custom'** checkbox, under the **'Model'** column (1st column) in the **'Steps'** data group, will default the tool to run only for the **'100 Year'** event.